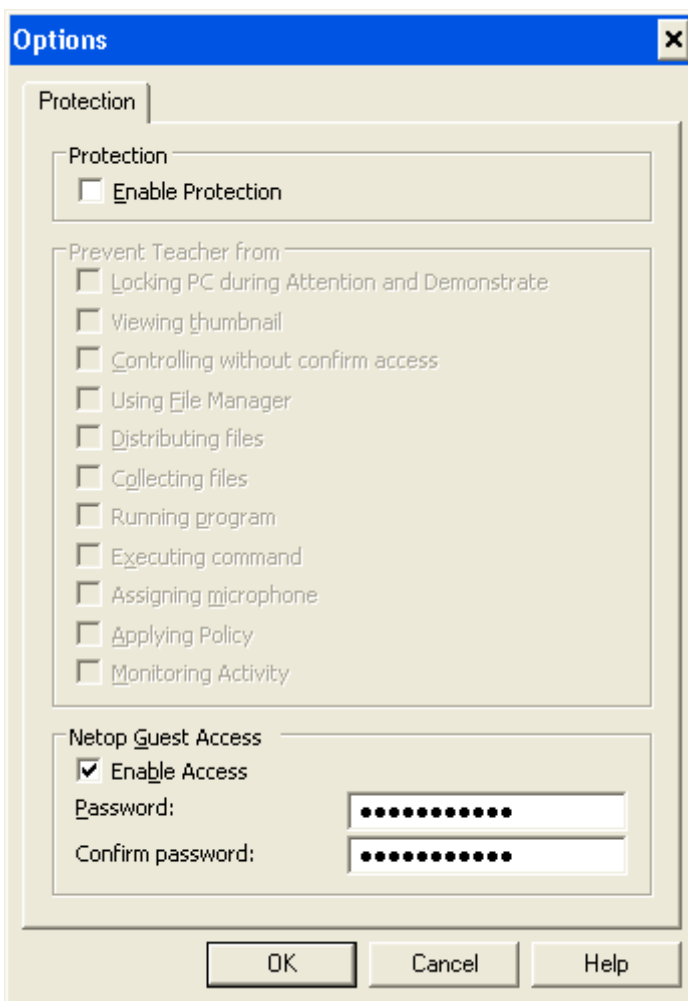


| | |
|------------------------|------------|
| Current version | 6.01 |
| Latest build | 2009-140 |
| Shipping from | 2009-05-26 |

New Features in Netop School 6.01

Remote Control of Student from a Netop Guest

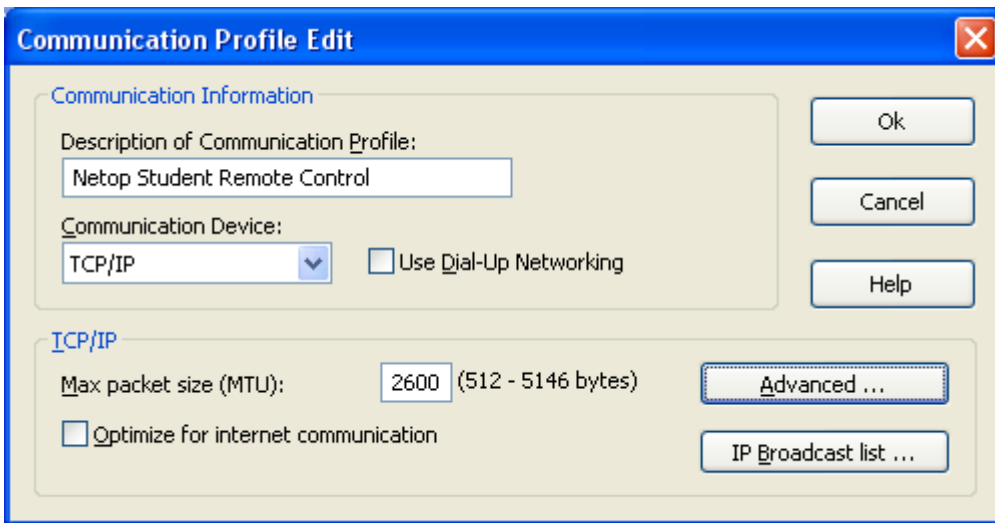
A Netop Remote Control Guest can now remote control a Netop School Student. For security reasons the remote control possibility must be enabled on the Student and protected by a password.



Remote control was possible before with the special Student Ex but will now be the standard for all Students and secured by the password.

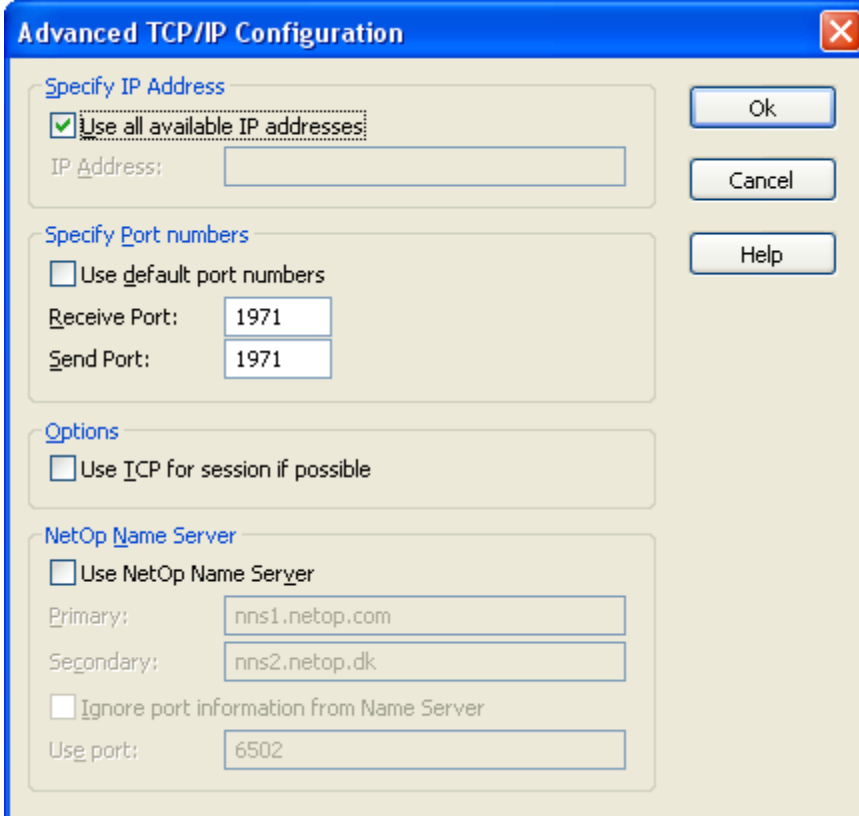
To be able to remote control Students, the Netop Remote Control Guest needs to be configured to use the same TCP/IP configuration as Netop School. In the Guest choose "Tools | Communication profiles". Create a new Communication Profile by clicking the "New..." button. Configure the dialog as shown in the picture below:

Netop School



The description of the Communication Profile can be any descriptive text.

Click “Advanced...” and configure the dialog as shown in the picture below:



It is essential that the Send and Receive ports are set to 1971, which is the TCP/IP port Netop School uses. If the Students are on a different TCP/IP subnet the “IP Broadcast list...” can be configured as well.

Save the Communication profile by clicking Ok in the dialogs. The Student can now be remote controlled as a normal Netop Remote Control Host as long as the “Netop Student Remote Control” communication profile is specified.

Netop School



The Netop Remote Control Guest can remote control the Student any time except when the Student is already remote controlled or monitored by the Teacher. If the Guest is remote controlling the Student the Teacher will be unable to remote control or monitor the Student.

Name and logo bitmaps

To comply with the new company standard 'Netop' is now spelled with a lower case 'o'. All logo bitmaps have been updated to use the new Netop kite logo.

Due to the change of the company name the default installation folder under "Program Files" has been changed from "Danware Data" to "Netop". Also configuration settings under "Documents and Settings" or "ProgramData" is changed from "Danware Data" to "Netop". If a PC has an old version of Netop School installed the folder names will remain the same.

Netop School available in Brazilian

Teacher and Student programs are now available in Portuguese Brazilian. Help and documentation will still be in English.

| | |
|------------------------|------------|
| Current version | 6.01 |
| Latest build | 2009-xxx |
| Shipping from | 2009-06-01 |

Fixes

Internet policy conflict with Microsoft ISA client

Various conflicts and problems with the Microsoft ISA client have been fixed.

Defects: DE143, DE927, DE1186, DE1106

Deployment wizard with advanced settings does not work on Vista

The problem has been resolved.

Defect: DE1103

List of files to collect files grows

Files that have been distributed to Students are automatically added to the list of files that can be collected again. As soon as files had been collected the list was permanently saved. Files from the collect list can now be permanently deleted.

Defect: DE1000

Teacher doesn't remember which files have been distributed

Files that had been distributed were only committed to memory. If the Teacher program was closed the list would be lost and had to be added manually to the files collection list. The distributed file list will now be remembered between Teacher runs. In comparison to "List of files to collect files grows" the issue was whether the Teacher was closed or not and whether files had been collected before the teacher was closed. With these two corrections the usability of file distribution/collection should be increased and more intuitive.

Defect: DE1030

Student password prompt would be shown behind the deployment wizard

In Advanced Student deployment mode the Teacher will launch the Student program to configure Student options. If the Student has a protection password the password prompt would often be shown behind the deployment wizard and the user would believe the deployment wizard was stuck. The problem has been resolved.

Defect: DE1033

Class Manager installation problem on non-English operating systems

Problem with the localized name of the "INTERACTIVE" account in Active Directory has been solved. The problem only appeared if the operating system wasn't English.

Defect: DE925

Icon images were missing on Personalize Ribbon screen

The problem has been solved.

Defect: DE925, DE1032

Help button not working in “Port Scan List” dialog

The problem has been solved.

Defect: DE117

Help request icon not displayed if Student is in Stealth mode

The problem has been solved.

Defect: DE930

NetOp Teacher Crashes When Using Quotation Marks in Policy Name

The problem has been solved.

Defect: DE781

Audio chat sometimes lost the sound for 10-20 sec

The problem has been solved.

Defect: DE79

Student Wizard sometimes freezes or crashes on Korean and Chinese version

The problem only occurred when the Student was started for the first time. The problem has been solved.

Defect: DE1154

Application Policy now also supports 64 bit operating systems

Application policy has been improved also to support 64 bit operating systems.

Recording a Demonstration in bitmap mode failed.

The problem was seen as an empty playback window with only mouse movements. The problem was always seen on Vista as Vista runs in bitmap mode but it was general issue. The problem has been solved.

Defect: DE972

Mouse shape was not transferred when demonstrating in bitmap mode

The mouse shape was not transferred to Students during demonstration in bitmap mode and the mouse cursor was displayed as the standard arrow. The problem was always seen on Vista as Vista runs in bitmap mode but it was general issue. The problem has been solved.

Defect: DE971

Two small corrections in Japanese translation

The translation of ‘Observe’ and ‘Teach’ was updated.

Defect: DE868

Netop.ini Terminal Path change does not work

The problem was related to environment variables (such as %USERNAME%) in the Netop.ini DATAPATH. The problem has been solved.

Defect: DE938

Crash after File Distribution

The error was also observed for the features that used file distribution under the hood, as for example "Apply Policy" and "Start Test". The problem has been solved.

Defect: DE1881

Crash in Teacher Activity when applications were ending at the same time as students were leaving the class

The problem was also seen when restarting Students PCs because it triggered this problem. The problem has been solved.

Defect: DE1882