

NetOp School

- Class Management



Modification notes – Class Server (2006144) and Class Manager (2006142)

Current version	9.00
Latest build	2006-144, 2006-142
Shipping from	2006-05-30

Changes

No changes in specialized Class Server functionality compared to earlier builds apart from updated interface graphics.

As for details about changes in general Host functionality in Class Server, read NetOp Remote Control release notes, once available after June 7. 2006.

NetOp School

- Class Management



Modification notes – Class Server (2006047) and Class Manager (2005252)

Current version	8.00
Latest build	2006-047, 2005-252
Shipping from	2006-03-08

Improvements

✓ Student identification method on Class Server extended

To support the use of any selected method for identifying Students (Student Login) in connection with Class Server, the Class Server Setup Options in the Student module has been extended with "Student login name" as identifier. This means that e.g. "Login As: %StdName%" can now be used for Student identification on the Class Server. Consequently, the Class Manager, build 2005252 and above and Class Server, build 2006047 and above, have been extended as well to handle this identification method.

The above is particularly useful in Terminal Server/Citrix environments.

NetOp School 4.00 Teacher and Student, build 2006026 and above are required.

An example:

Larger Terminal Server/Citrix installations with more physical classrooms will benefit from this, if they are using environment variables to identify the physical location of a certain logged on user/PC, e.g. variable %location% resolved into Room1-PC12. This **resolved** variable is used as Student identification in the Class database (Class Manager), when Student records are created:

The screenshot shows a dialog box titled "Edit Student" with a close button (X) in the top right corner. It is divided into two sections: "Student information" and "Student identification".

Student information:

- Student: Room1-PC12
- Foreign ID: (empty)
- Comments: (empty)

Student identification:

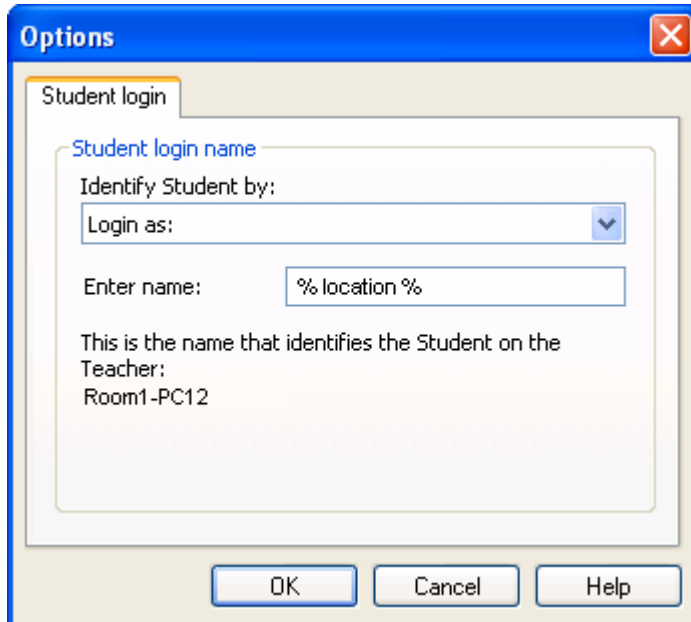
- Windows logon name: (empty)
- Computer name: (empty)
- Student login name: Room1-PC12

At the bottom, there are three buttons: "OK", "Cancel", and "Help".

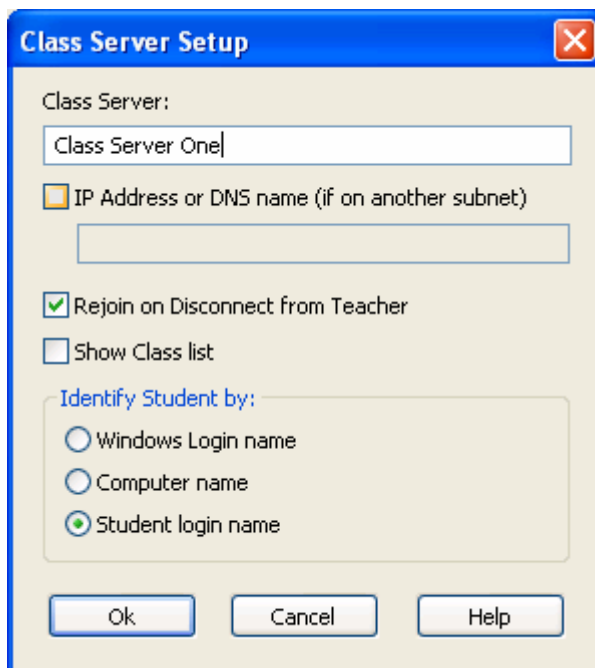
This corresponds to the settings in the Student module:

NetOp School

- Class Management



and the selection in the Student Use Class Server setting:



In this example a Course – Room1 – is created in the Class Manager, adding all of the Student records to this course (Room1-PC1...Room1-PCxx)

While the Students are using Class Server to connect to the correct Teacher – in this case connecting to the course Room1 – the Teacher modules will NOT use Class Server. The teacher will start a Teacher module in the traditional way, and be prompted for selecting

NetOp School

- Class Management



Class at startup (setting on Teacher/Class), picking Room1 from the dropdown list of pre-defined classes.

On selection of Class (corresponding to the term Course on the Class Manager) – Room1 – the Teacher and Students will connect as usual for NetOp School.

The Teacher module may run locally or in a terminal session.

NetOp School

- Class Management



Modification notes - Class Server (2005143) and Class Manager (2005140)

Current version	8.00
Latest build	2005-143, 2005-140
Shipping from	2005-05-25

Release of School Class Management version 8.00

See School Class Management Release Notes for details.