

Release notes to NetOp School v. 3.02 Windows 2003 - XP – 2000 – NT – ME – 9x

Current version	3.02
Latest build	2004-317
Shipping from	2004-19-11

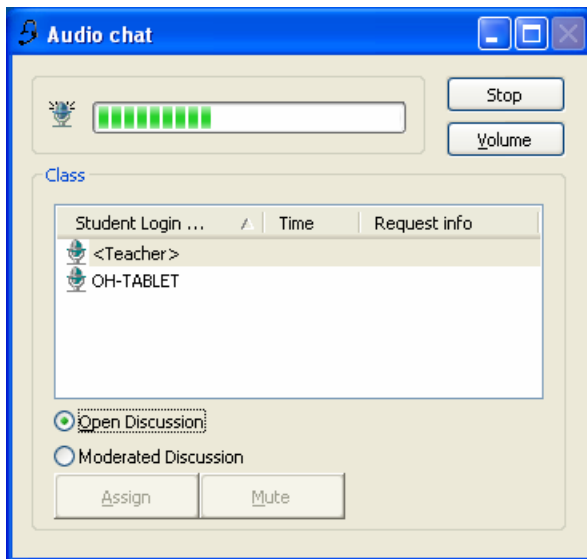
News and improvements since v3.01 2004246

This release will replace version 3.01 and add the following news, improvements and fixes:

Audio Chat – full duplex:

Open Discussion: Full two-way Audio Chat for two users – Teacher and a Student. Users speak together simultaneously, like e.g. Microsoft Messenger. Optional choice for *Moderated Discussion*.

Moderated Discussion: More than two users speak together with Teacher as moderator. Microphone is assigned for one user at a time.



AudioChat quality improved by factor 256 (16-bit sampling)

Previously NetOp School would start testing from the lowest possible connection and up – with the intention of finding the best mix of quality and bandwidth savings. This would most likely always result in using the first codec on the list - a connection and sampling rate of the type: GSM, 8000 kHz, 8 bit sampling.

Automatic selection of best common codec for optimal sound quality

Since standard available bandwidth has grown significantly lately, the wish now goes more in the direction of “quality above bandwidth savings”. To accommodate that wish we have reversed the connection test, most likely resulting in a better default quality. When the Teacher is loaded for the first time, the audio compression priority list is initialized with a modified list :

- Microsoft GSM 6.10, 11025 kHz, 16 Bit
- TrueSpeech, 11025 kHz, 16 Bit
- Microsoft GSM 6.10, 8000 kHz, 8 Bit
- TrueSpeech, 8000 kHz, 8 Bit
- Microsoft IMA ADPCM, 8000 kHz, 8 Bit
- MS-ADPCM, 8000 kHz, 8 Bit
- PCM, 8000 kHz, 16 Bit

NOTE! If you updated from a previous build or version, you should check that the above list is in use (Teacher/Tools/Options/Audio Chat/Advanced – if not: Press the Use defaults button).

For optimum performance, also check that microphone sensitivity is set to: Silence level on 2. (second) mark and Line Hold on 9. (ninth) mark

Adding Audio to a Recording

It's now also possible to add Teacher Audio to a Recording of a Remote Control or Monitor session. Previously that was only possible for at local Teacher recording. Sound quality according to above.

Using Always select Class at Startup and Maintenance password

This setting is placed under Options on the Teacher and is used in environments where the Teacher module needs to switch between different Classes. A Maintenance password among other things protects Options, and will as such prompt the user with a password to access this option. To avoid this inconvenience a change has been made. If a Maintenance Password is set, it is now possible to select Class at Startup without entering a password, but all other options on this tab are disabled in this situation.

Error corrections since 3.01 2004246

Student deployment: Name Server selections not used

As an option in Student deployment from Teacher, you can select to use the TCP/IP or Internet profile. This selection enables the lower NetOp Name Server section for entering name for primary and secondary Name Server and name space ID. Previously the settings were not used. This is corrected, and these settings are now also applied for the deployment.

File distribution on large disks

File distribution didn't work correctly if the free disk space on the receiving side were more than 2 GByte. The error influenced Demonstration of Media and Recordings, File Distribution, File Collection, Policy and Send Message. Now fixed to work correctly.

Rejoin despite of Maintenance Password on School

The Student action Rejoin (button) can be protected by a Maintenance password to avoid Student interference during a Class session. When using the Student Identification Method: Prompt for user name, and a non-unique user is entered, the Student is rejected and is asked to enter a unique name. Unfortunately this would bring up the dialog box for Maintenance Password since the system automatically performs a Rejoin operation to Prompt again.

This is now changed to allow Prompt for user name without displaying the Maintenance Password box in this situation.

Settings for sorting of the thumbnails are lost on XP

The floating sorting of the thumbnails are lost on XP when changing thumbnail resolution. Fixed.

Error when moving Thumbnails freely

If the Teacher thumbnail view area is too small for showing all thumbnails, scrollbars are added to the view. An error in handling thumbnails outside the default starting view – upper left corner – made it impossible to move thumbnails around freely if they were placed outside the default view. Moving thumbnails around would cause them to be sent back to the default view area, either causing thumbnails to be placed on top of each other, or causing errors in updating the graphics. Fixed – thumbnails will now keep the position they were moved to, inside and outside the default view area.

Connection Password in Assistant Teacher

When using Connection Password and a class Workgroup is created, the Assistant Teacher displays an error, that one or more Connection Passwords are incorrect. The current password would not be passed to an Assistant Teacher, thus preventing connection to the involved Students.

To avoid that situation, the password is now automatically passed from the main Teacher to Assistant Teachers.

Capital letters on On-Screen keyboards on Tablet PC's

The behavior of the Shift key and Caps Lock key were incorrect during Remote Control of a Student from a Teacher module on a Tablet PC.

The behavior is now correct and in synchronization with the local keyboard settings on the Student.

Dutch language version

Some minor text corrections were made to the NL School version.

Policy incorrectly displayed during Student logoff

If a policy is applied on a Student and the Student user logs off, the current Policy will be released even though the Student module technically remains in Class. Once the Student logs on again the Startup Policy (default None) will be applied.

The Student list would erroneously still display the name of the previous Policy, leaving the Teacher with the impression that nothing had changed even though the Startup Policy in fact was being applied, e.g. None. The error has been corrected. The Student list will now be updated to show the Startup Policy on logoff from the Student

Microsoft Hotfix KB840987 for Windows 2000 requires updated NetOp drivers

On October 13, 2004 Microsoft released an urgent security update for Windows named KB840987.

The Windows 2000 variant of that security update unfortunately has the side effect of requiring an update to the NetOp drivers in order for keyboard and mouse handling features in NetOp to remain fully functional. If the Microsoft update is installed without a corresponding update to NetOp, NetOp will be forced to use a less reliable fallback algorithm, which may result in some or all of the following symptoms:

- When using NetOp to lock the keyboard, the user can bypass the lock by pressing "Ctrl+Alt+Delete" and then "Escape"
- Some advanced keyboard sequences, typically used with accented letters, Asian or Middle Eastern languages might not be received correctly.
- Some programs do not accept remote mouse clicks or keystrokes in any case.

This build includes the updated drivers needed. Previously, a standalone fix for the same issue was released, so users may already have protected their computers.